

2019 Traffic Signal Improvements: Keith Wilson Rd at Janis St (Shoulder Closure)

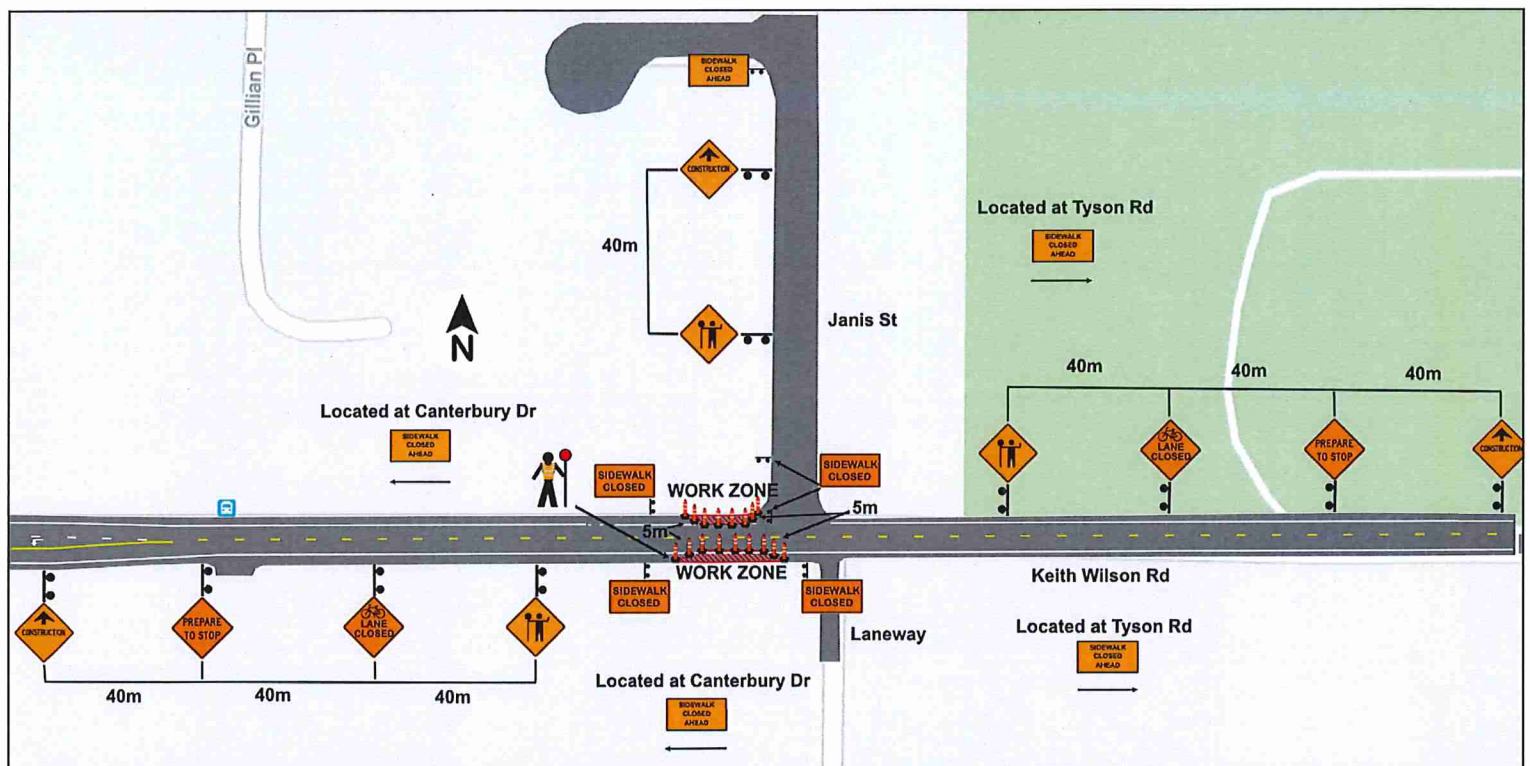


Figure 7.5: Work on Shoulder - Short and Long Duration
Both closures shown - Only one side to be worked on at a time
TCP on site to assist with vehicles, pedestrians, bicyclists and all others

2019 Traffic Signal Improvements: Keith Wilson Rd at Janis St (Eastbound)

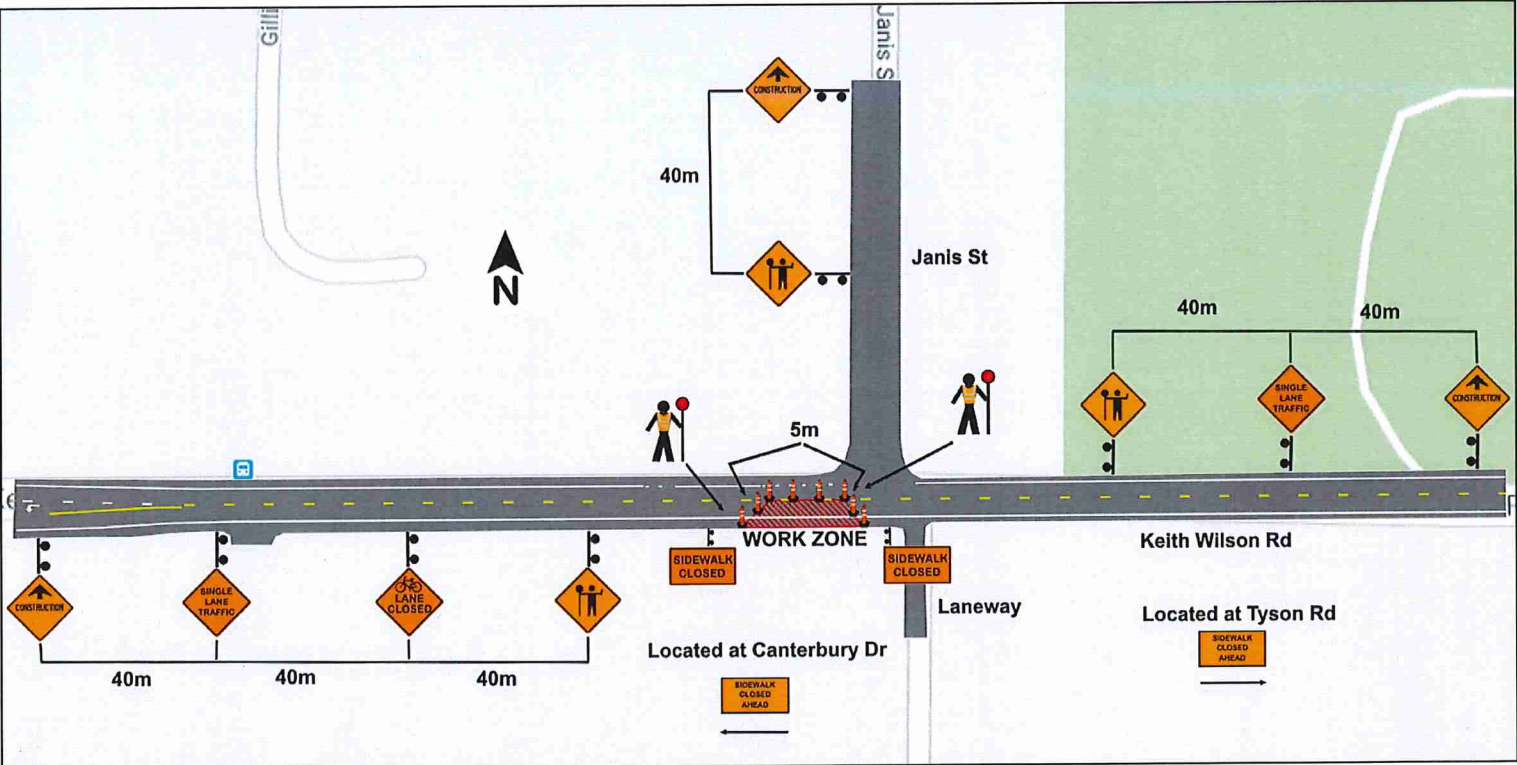


Figure 11.4: Intersection Lane Closure - Two-Lane, Two-Way Roadway with TCP's (Far Side) - Short and Long Duration
TCPs on site to assist with vehicles, pedestrians, bicyclists and all others